

Stainless Steel mirror mounts

MNI-HSS

As special option for ultimate stability we offer the **MNI-HSS**. The back plate, the front plate and the screws are made of stainless steel.

This mirror mount guarantees high thermal and highest dimensional stability.

- Thick back plate and thick front of special stainless steel
- 4 strong springs
- Equipped with two stainless steel or brass fine thread screws with **150 $\mu\text{m}/\text{turn}$ (170 TPI)** thread
- M4 thread (standard)
- #8-32 thread available on request

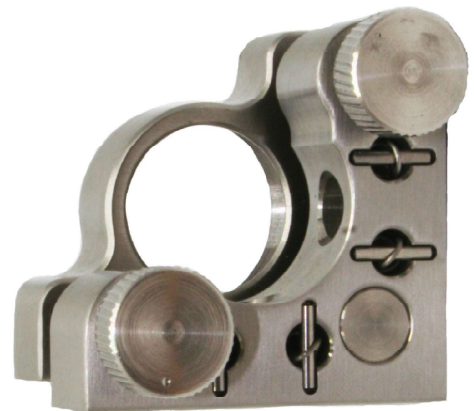


MDI-HSS

As special option for ultimate stability we offer the **MDI-HSS**. The back plate, the front plate and the screws are made of stainless steel.

This mirror mount guarantees high thermal and highest dimensional stability.

- Thick back plate and thick front of special stainless steel
- 4 strong springs
- Equipped with two stainless steel or brass fine thread screws with **150 $\mu\text{m}/\text{turn}$ (170 TPI)** or **250 $\mu\text{m}/\text{turn}$ (100 TPI)** thread
- M6 thread with M4 inner lowering (standard)
- M4 thread available on request
- #8-32 or #1/4-20 thread available on request



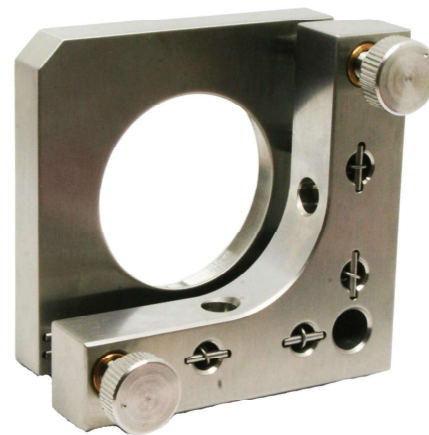
Stainless Steel & Ceramic mirror mounts

MXI-HSS

As special option for ultimate stability we offer the **MXI-HSS**. The back plate, the front plate and the screws are made of stainless steel.

This mirror mount guarantees high thermal and highest dimensional stability.

- Thick back plate and thick front of special stainless steel
- 4 strong springs
- Equipped with two stainless steel or brass fine thread screws with **150 $\mu\text{m}/\text{turn}$ (170 TPI)** thread or **250 $\mu\text{m}/\text{turn}$ (100 TPI)** thread
- M6 thread with M4 inner lowering (standard)
- M4 thread available on request
- #8-32 or #1/4-20 thread available on request



MDI-HC

For ultimate thermal stability we offer the **MDI-HC**. The back plate and the front plate are made of ceramic. This mirror mount is available with brass or stainless steel screws.

- Thick back plate and thick front plate of ceramic
- 4 strong springs
- Equipped with two brass or stainless steel fine thread screws with **150 $\mu\text{m}/\text{turn}$ (170 TPI)** thread or **250 $\mu\text{m}/\text{turn}$ (100 TPI)** thread
- Inner lowering for M4 screws

