

Fine Adjustment

The *Fine Adjustment* mirror mounts do not have the quality of the Radiant Dyes Mirror mounts. The screws of these mounts have a standard pitch of 170 TPI but they are made in serial production and are not aligned to the nut.



Venus Series

- 170 TPI fine thread screws made of brass
- M4 inner lowering
- Low price
- Available with following front plates
- Part. No. = Venus-2-(name of front plate)



1/2" open



1/2" closed



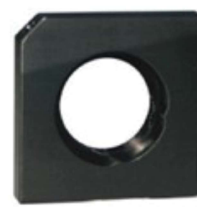
closed

Earth Series

- 170 TPI fine thread screws made of brass
- M6 inner lowering
- Low price
- Available with following front plates
- Part. No. = Earth-2-(name of front plate)



1" open



1" closed



closed