

**Post Holders, Posts, Pedestals, Bases & Holding Forks**



**Magnetic Bases**

**Magnetic bases MF-OG**

without adapter sheet

**Magnetic bases MF-MA**

with adapter sheet



**Post Holder RDS**



The RDS-post holders (including base) are suitable for post dimensions from 11 to 15 mm diameter. Very stable through a precise three-point-support. They are compatible to posts and post holders on the market.

Size	Inner lowering for M6 or M8 screws	With M6 thread	Clearance Hole 15 mm
25 mm	---	---	RDS-H-25
35 mm	RDS-35	RDS-T-35	RDS-H-35
40 mm	RDS-40	RDS-T-40	RDS-H-40
50 mm	RDS-50	RDS-T-50	RDS-H-50
75 mm	RDS-75	RDS-T-75	RDS-H-75
100 mm	RDS-100	RDS-T-100	RDS-H-100

# Post Holders, Posts, Pedestals, Bases & Holding Forks

## Post Holder without Base

- Post Holder without base
- M6 thread on the bottom
- Suitable for post from 11 to 15 diameter

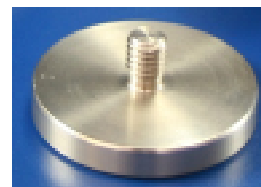
Size	Order Number
25 mm	RDS-OF-25
40 mm	RDS-OF-40
65 mm	RDS-OF-65
90 mm	RDS-OF-90



## Post Holder Base for RDS-OF

### RDS-F

- Base for RDS-OF
- Height 5 mm
- With M6 thread



## Mounting Bases for Post Holders and Pedestals

**RD-MB-2** (76 mm x 26 mm x 10 mm)

**RD-MB-1** (58 mm x 25 mm x 10 mm)



## Posts RD-GS

- Stainless Steel Posts
- Posts fit to all Post Holders
- Standard M4 inside threads on the one side and M6 on the other side
- One grub screw (M4) including

Diameter	Size	Order number
Ø 0,5 inch	50 mm	RD-GS-50 Ø 0,5 inch
	75 mm	RD-GS-75 Ø 0,5 inch
	100 mm	RD-GS-100 Ø 0,5 inch

Diameter	Size	Order number
Ø 13 mm	50 mm	RD-GS-50 Ø 13 mm
	75 mm	RD-GS-75 Ø 13 mm
	100 mm	RD-GS-100 Ø 13 mm

Diameter	Size	Order number
Ø 15 mm	50 mm	RD-GS-50 Ø 15 mm
	75 mm	RD-GS-75 Ø 15 mm
	100 mm	RD-GS-100 Ø 15 mm



### Post Holder Connector

#### RD-PHC

- 90° connection between two posts



Mounting option

### Holding Forks RDK-1

RDK-1 Holding Fork, flexible and stable fixing of all RDS, RDS-G and RDS-OG post holders and pedestals through precise three-point-support.

Compatible to other pedestals on the market.

- RDK-1 mini
- RDK-1 midi
- RDK-1 maxi



### Holding Forks RDK-2

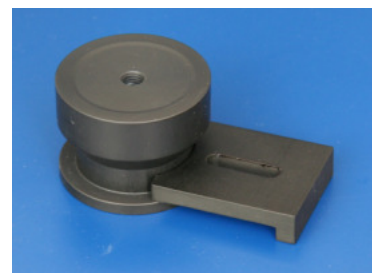
RDK-2 Holding Fork, flexible and stable fixing of RDS-G pedestals

For RDS-G Pedestals:

**RDK-2 midi** (Ø 25 mm)

For RDS-G-B Pedestals:

**RDK-2 maxi** (Ø 51 mm)



## Clamping Forks RD-PH

RD-PH clamping fork, stable fixing of our RD1 and RD2 Mirror Mounts:

- **RD-PH-1** (38 mm x 16 mm x 9 mm)
- **RD-PH-2** (50 mm x 19 mm x 17 mm)
- **RD-PH-3** (50 mm x 19 mm x 23 mm)
- **RD-PH-4** (50 mm x 12 mm x 8 mm )



## Table Clamps RD-TC

Table Clamp to fix several opto-mechanics on the table.



**RD-TC-B RD-TC-S**



**RD-TC-D**

## Base Plates and Height Adapter for RD1 and RD2

### Base Plate:

for RD1 Mirror Mounts:

**RD1-GP**

for RD2 Mirror Mounts:

**RD2-GP**

### Height Adapter:

for RD1 Mirror Mounts:

**RD1-HA1** beam height 50 mm

for RD2 Mirror Mounts:

**RD2-HA1** beam height 75 mm

**RD2-HA2** beam height 100 mm



**Base Plates & Height Adapters for *MNI, MNI-H, MDI, MDI-H(S), MXI***

**MNI-Base plate:**

- Available with long hole in longitudinal direction or with long holes in crosswise direction

**MNI Height Adapters:**

- For 50 mm beam height
- For 75 mm beam height

**MDI-Base plate:**

- Available with long hole in longitudinal direction
- Available with long holes in crosswise direction

**MDI Height Adapters:**

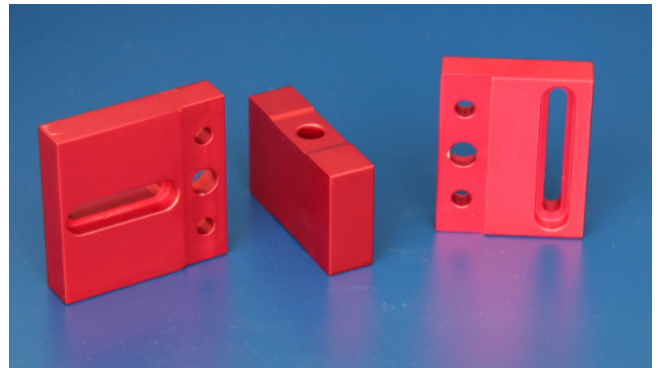
- For 50 mm beam height
- For 75 mm beam height

**MXI-Base plate:**

- Available with long hole in longitudinal direction
- Available with long holes in crosswise direction

**MXI Height Adapters:**

- For 75 mm beam height
- For 100 mm beam height



## Pedestals



All pedestals with thread (RDS-G and RDS-HS) can be combined with each other.

All Posts and Pedestals are also available with a lateral hole.

## RDS-MNI

- Stainless steel pedestal
- Diameter 25.4 mm
- The RDS-MNI system fits to our MNI Mirror Mounts
- Can be used on both sides
- One side M4, other side M6 thread

### Pedestal:

#### RDS-MNI-P

Size in mm	Order number
25	RDS-MNI-P-25
50	RDS-MNI-P-50
75	RDS-MNI-P-75

Other sizes on request.

### Holding Fork:

RDS-MNI-HF-S (small)  
RDS-MNI-HF-M (medium)



RDS-OG

- Diameter 25.4 mm
- Pedestal with inner lowering for M4, M6 or M8 screws
- Available in aluminium, anodized aluminium or stainless steel

Size in mm	Size in inch	Order number
12.7	1/2	RDS-OG-0,5
19.1	3/4	RDS-OG-0,75
25		RDS-OG-25
25.4	1	RDS-OG-1
38.1	3/2	RDS-OG-1,5
50		RDS-OG-50
50.8	2	RDS-OG-2
63.5	5/2	RDS-OG-2,5
75		RDS-OG-75
76.2	3	RDS-OG-3
100		RDS-OG-100
101.6	4	RDS-OG-4
127	5	RDS-OG-5
152.4	6	RDS-OG-6

Other sizes on request

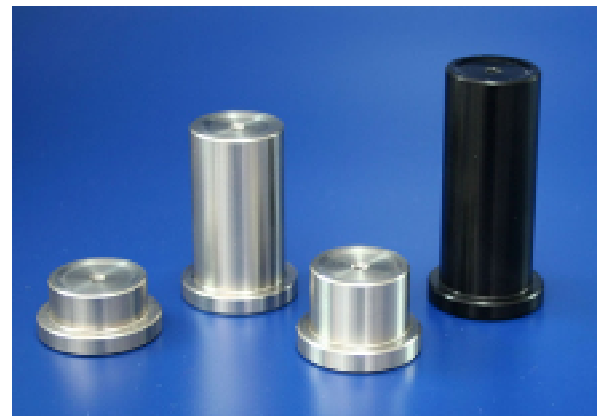


RDS-G

- Diameter 25.4 mm
- Pedestal with M4 (standard) or M6 thread on top
- Available in aluminium, anodized aluminium or stainless steel

Size in mm	Size in inch	Order number
12.7	1/2	RDS-G-0,5
19.1	3/4	RDS-G-0,75
25		RDS-G-25
25.4	1	RDS-G-1
38.1	3/2	RDS-G-1,5
50		RDS-G-50
50.8	2	RDS-G-2
63.5	5/2	RDS-G-2,5
75		RDS-G-75
76.2	3	RDS-G-3
100		RDS-G-100
101.6	4	RDS-G-4
127	5	RDS-G-5
152.4	6	RDS-G-6

Other sizes on request



# Post Holders, Posts, Pedestals, Bases & Holding Forks

## RDS-G-M

- Diameter 31.5 mm
- Pedestal with M4 (standard) or M6 thread on top
- Available in aluminium, anodized aluminium or stainless steel

Size in mm	Size in inch	Order number
25		RDS-G-M-25
25.4	1	RDS-G-M-1
38.1	3/2	RDS-G-M-1,5
50		RDS-G-M-50
50.8	2	RDS-G-M-2
63.5	5/2	RDS-G-M-2,5
75		RDS-G-M-75
76.2	3	RDS-G-M-3
100		RDS-G-M-100

Other sizes on request



## RDS-G-B

- Diameter 51 mm
- Very stable pedestal with M4, M6 or M8 thread on top
- Available in aluminium, anodized aluminium or stainless steel
- Fits perfectly for our RD2 Mirror Mounts



- Mirror mounts will be fixed by a set screw





### RDS-HS

- Height adjustable pedestals
- Easy to use
- Precise and ultra-stable design

**Available in the following sizes:**

Size in mm	Order number
30-38 mm	RDS-HS-30-38
38-50 mm	RDS-HS-38-50
50-70 mm	RDS-HS-50-70
55-80 mm	RDS-HS-55-80
70-110 mm	RDS-HS-70-110



Developed by the University of Heidelberg Inst. of Physics AG Prof. Schmiedmayer by Dr. Alois Mair

### RDS-HSA

- Height adjustable adapter for pedestals
- Compatible to all pedestals
- Size 20-29 mm

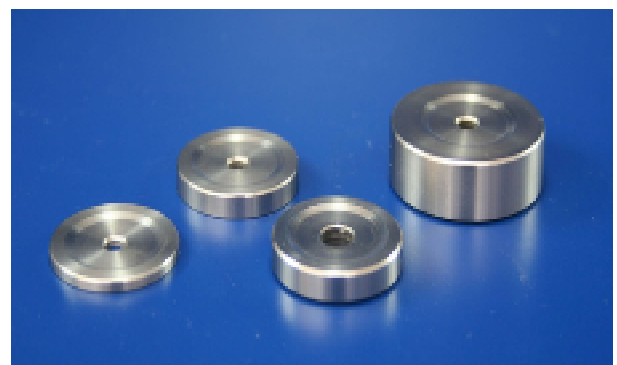


### RDS-HA

- Height adjustable adapter for pedestals
- Compatible to all pedestals
- Size 20-29 mm

**Available in the following sizes:**

Size in mm	Order number Ø 1"	Order number Ø 31.5 mm
2 mm	RDS-HA-1"-2	RDS-HA-M-2
3 mm	RDS-HA-1"-3	RDS-HA-M-3
4 mm	RDS-HA-1"-4	RDS-HA-M-4
5 mm	RDS-HA-1"-5	RDS-HA-M-5
10 mm	RDS-HA-1"-10	RDS-HA-M-10



## Clamping Arms

### RD-CA-S

Clamping height < 23 mm  
Thread M4

### RD-CA-L

Clamping height < 40 mm  
Thread M4

Mounting Options:



## V-mounts

For mounting of cylindrical objects.  
(one clamping arm included)

### RD-VM-S

Ø 0.5 mm - Ø 22 mm

### RD-VM-L

Ø 14 mm - Ø 50 mm



## Thread adapters RD-TA

Available in the following sizes:

External Thread	Internal Thread	Length	Order Number
M8	M6	9 mm	RD-TA-8-6-9
M8	M6	6 mm	RD-TA-8-6-6
M6	M4	8 mm	RD-TA-6-4-8
M6	M4	6 mm	RD-TA-6-4-6



## Thread Adapters with Set Screw RD-TA-GS

Available in the following sizes:

Grub Screw	External Thread	Order Number
M4	M6	RD-TA-GS-4-6
M4	M8	RD-TA-GS-4-8
M6	M8	RD-TA-GS-6-8



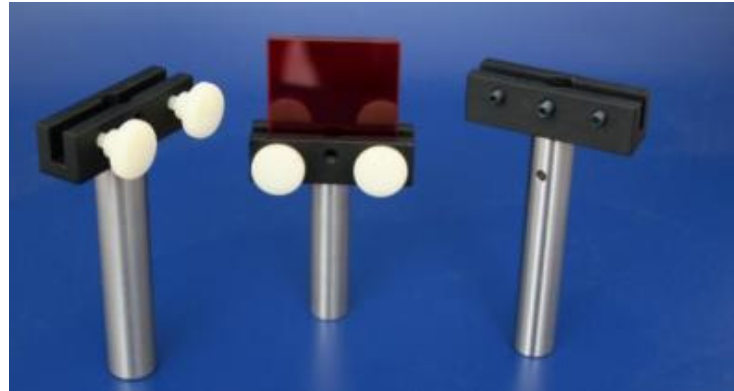
### Filter Holder

**RD-FH-K**

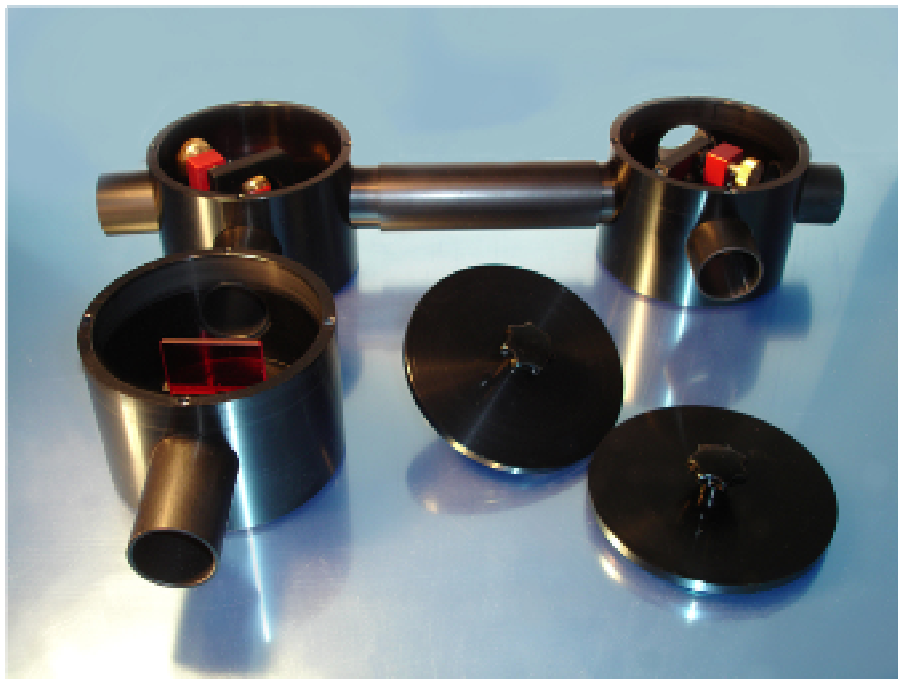
Plastic thread screw with knurled head

**RD-FH-M**

Including Grub Screws with plastic inserts



### Laser Beam guiding Tools



Variable beam guiding tools to protect you against scattered laser light.

The beam guide components are easy to handle and can be fixed on each optical table with our RDS-G Pedestals and RDK-1 holding forks.

The tanks can be used together with our MDI mirror mount series or any other compatible mirror mount for beam separation, beam folding or spectral filtering.

The following components are available:

- Guiding tubes in any length
- Connection tubes
- Optic tank with two, three or four in/outputs for MDI mirror mounts and compatible mounts