

Lens Mounting



Lens Mounting– Lens Mounts RD-LM

RD-LM

Features:

- Fixed Lens Mount
- With 3 point bases
- Available for several lens sizes
- Mountable on a M4 post

Available for the following lens sizes:

- Ø 12 mm and Ø 0.5"
- Ø 18 mm and Ø 20 mm
- Ø 25 mm and Ø 1"
- Ø 30 mm
- Ø 40 mm
- Ø 50 mm and 2"
- Ø 75 mm



Lens Mounting– Lens Mounts with internal thread

RD-LM-WR

Features:

- Fixed Lens Mount
- With internal thread
- One retaining ring included
- Mountable on a M4 post

Available for the following lens sizes:

- Ø 0.5"
- Ø 1"
- Ø 2"



RD-VL

RD-VL

Features:

- Stable Lens Mount
- 2 screws & 1 thread pin
- Several inserts available
- Option: with 150 μm fine thread screws
- Adjustment line in x-y direction: 8 mm

This variable lens mounting consists of an adjustment body and a 1" lens insert (on request also 0.5"). The great advantage of the variable lens mounting is the possibility to adjust the lens in the xy-plane. The lens mounting is delivered with thread pin.

RD-VL-MNI

Inserts for RD-VL-MNI:

- \varnothing 12 mm and \varnothing 1/2" lenses
- \varnothing 18 mm and \varnothing 20 mm lenses
- \varnothing 25 mm and \varnothing 1" lenses

RD-VL-MDI

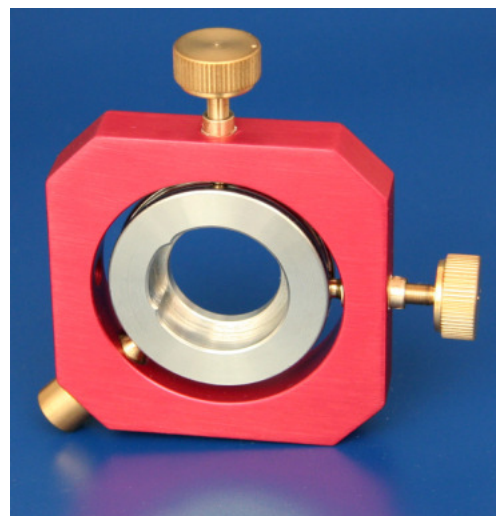
Inserts for RD-VL-MDI:

- \varnothing 30 mm lenses
- \varnothing 40 mm lenses

RD-VL-MXI

Inserts for RD-VL-MXI:

- \varnothing 50 mm lenses
- \varnothing 75 mm lenses



Lens Mounting– Lens Inserts

Inserts for RD-VL-MNI:

- \varnothing 12 mm and \varnothing 1/2" lenses
- \varnothing 18 mm and \varnothing 20 mm lenses
- \varnothing 25 mm and \varnothing 1" lenses

Inserts for RD-VL-MDI:

- \varnothing 30 mm lenses
- \varnothing 40 mm lenses

Inserts for RD-VL-MXI:

- \varnothing 50 mm lenses
- \varnothing 75 mm lenses

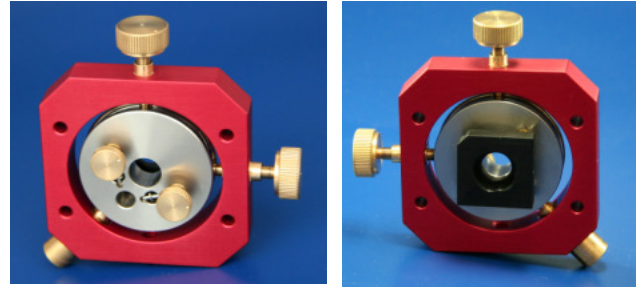


RD-VL Mirror Mounts

This variable lens mount consists of an adjustment body and a lens mount (1" or 0.5"). The great advantage of the variable lens mount is the possibility to adjust the lens in the xyz-plane with the aid of a small round mirror mount. The lens mounting is delivered with thread pin. Adjustment line in x-y direction: 8 mm

Available in the following sizes :

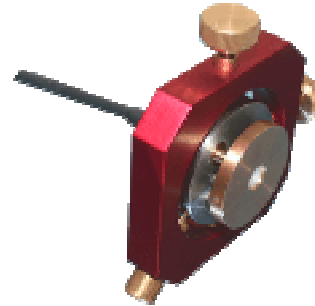
- RD-VL-MNI-Mirror Mount (1/2")
- RD-VL-MDI-Mirror Mount (1")
- RD-VL-MXI-Mirror Mount (2")



Lens mounting RD-VL-FC for Fiber Coupling

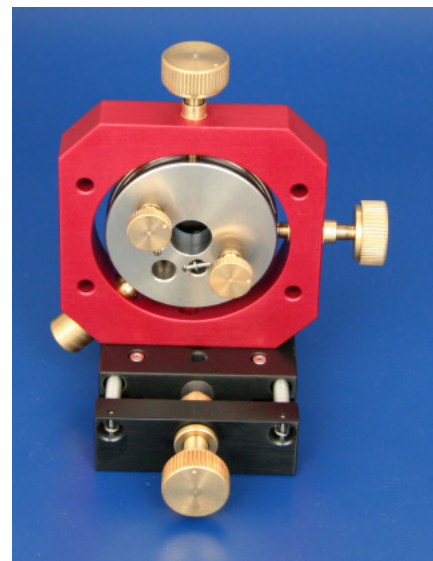
Ready to use for the following fibers:

- SMA
- FC/PC

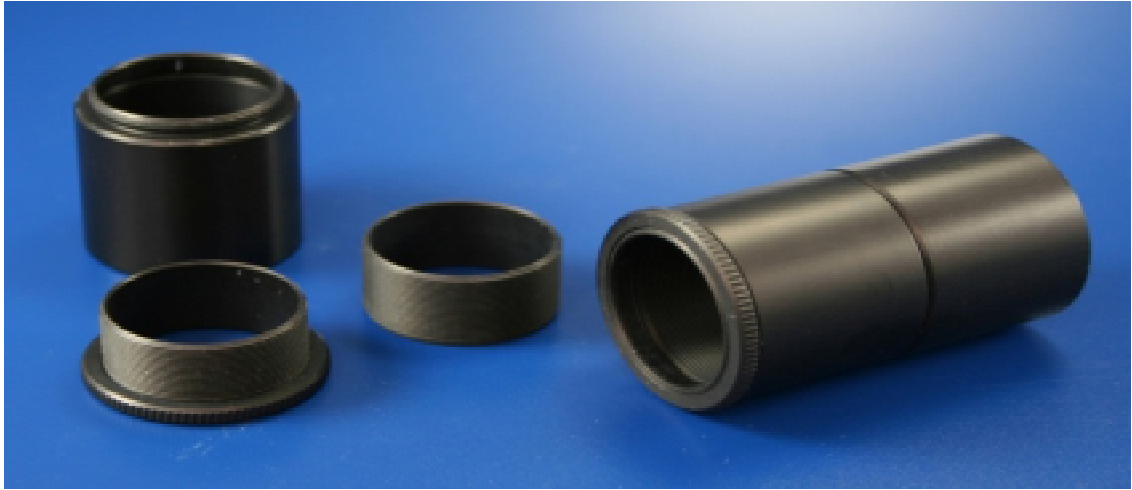


Example:

Easy to fix on a translation stage



Lens Tube Systems



The Radiant Dyes Lens Tube System (**RD-LT**) is an easily combinable system to build up complex optical systems. The Lens Tubes are available with the diameters 0.5" and 1". The system is compatible with the Radiant Dyes Lens Mounts (RD-LM-WR) and also compatible to other manufacturing companies.

Lens Tubes Ø 0,5"

External/internal thread 0,5"-40

Size	Order number
0,3"	RD-LT-05-03
0,5"	RD-LT-05-05
1"	RD-LT-05-1
2"	RD-LT-05-2
3"	RD-LT-05-3

Lens Tubes Ø 1"

External/internal thread 1"-40

Size	Order number
0,3"	RD-LT-1-03
0,5"	RD-LT-1-05
1"	RD-LT-1-1
2"	RD-LT-1-2
3"	RD-LT-1-3



RD-LTS-BD

- Beam Dump



Retaining Rings

- **RD-LT-RR-05** (for Ø 0.5")
- **RD-LT-RR-1** (for Ø 1")

With the retaining ring different optics can be mounted into the lens tubes. Two retaining rings are necessary to mount one optic.

Lens Tube Couplers

- **RD-LT-C-05** (for Ø 0.5")
- **RD-LT-C-1** (for Ø 1")

Lens Tube Couplers with external thread.

Counter Rings

- **RD-LT-CR-05** (for Ø 0,5")
- **RD-LT-CR-1** (for Ø 1")

Adjustable Lens Tubes

- **RD-LT-A-05-05** (for Ø 0.5" -Thread size 0.5")
- **RD-LT-A-05-1** (for Ø 0.5" -Thread size 1")
- **RD-LT-A-1-05** (for Ø 1" -Thread size 0.5")
- **RD-LT-A-1-1** (for Ø 1" -Thread size 1")

Lens Tube Inserts

- **RD-LT-I-05** (for Ø 0.5")
- **RD-LT-I-1** (for Ø 1")

Mounting Tools

- **RD-LT-MTRR-05** (for Ø 0.5")
- **RD-LT-MTRR-1** (for Ø 1")

This tool is for installation and adjustment .

